

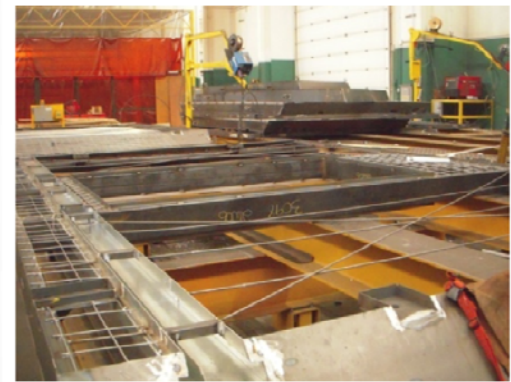
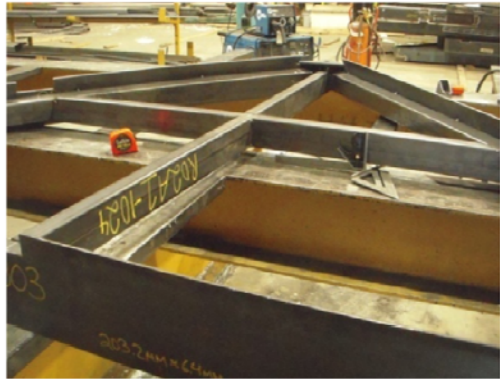
IHI R&D MANUFACTURING FACILITY

RECENT ACTIVITY
APRIL 2, 2009



VARIOUS PITCHED ROOF PANELS UNDER FABRICATION

PITCHED ROOF PANELS READY FOR WIRE MESH AND REINFORCING

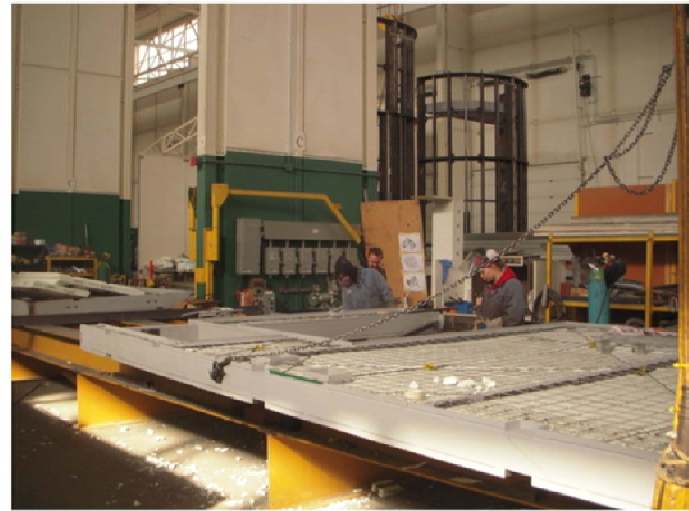


PANELS READY FOR INSULATION

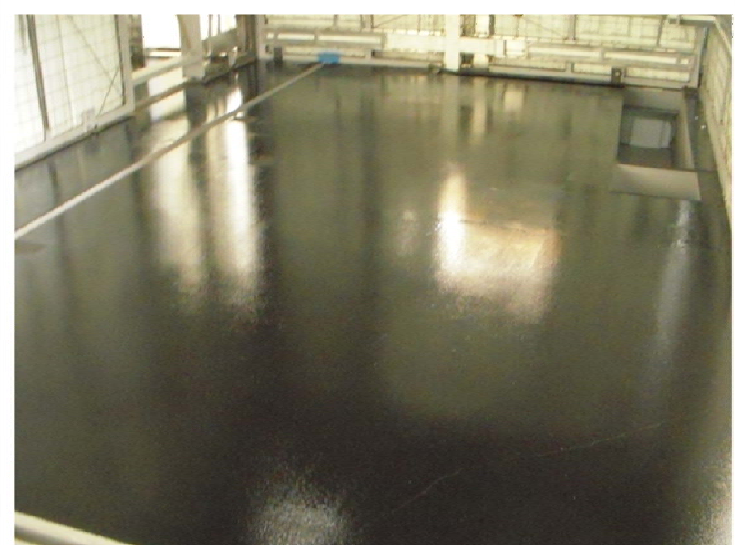
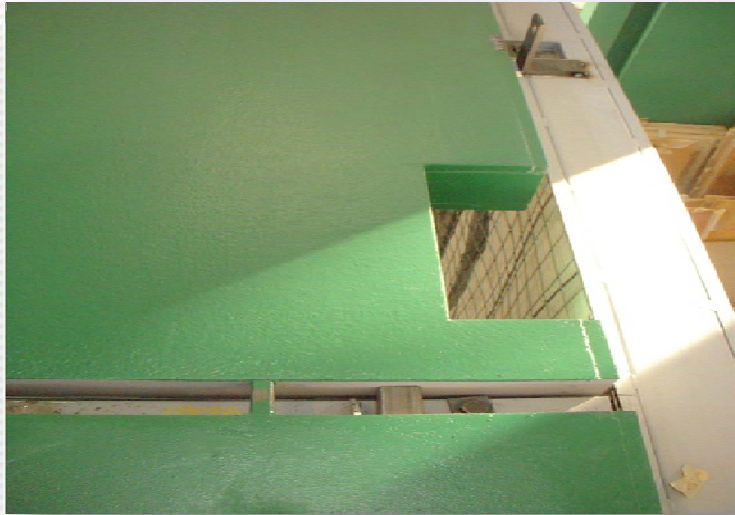




**PANELS READY FOR STEEL COATING
PRIOR TO CONCRETING**



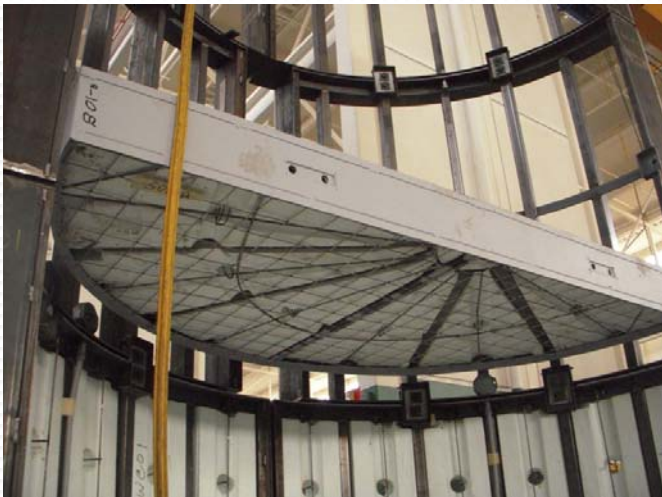
PANELS READY FOR CONCRETING



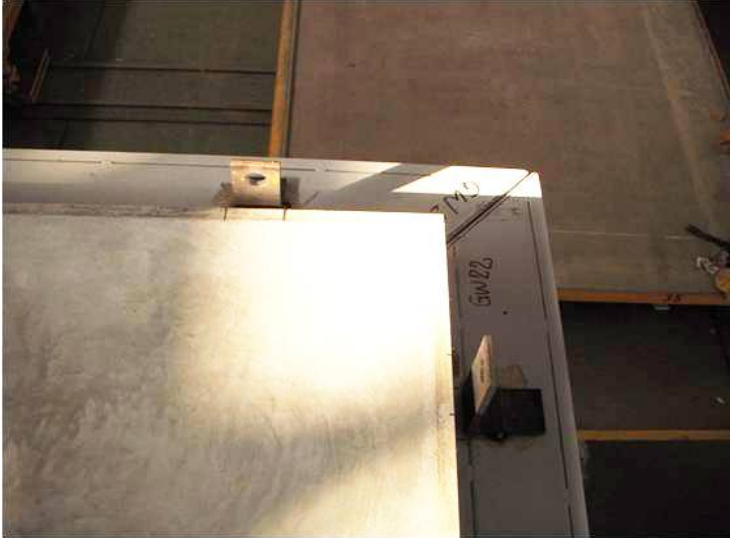
FLOOR PANELS COATED WITH FOREST GREEN EPOXY, KITCHEN/BATHROOMS WITH BLACK URETHANE ELASTOMER AND THE CEILING'S SLAB PANELS ARE COATED WITH WHITE COLOR ELASTOMER PAINT.

QUALITY, ACCURACY, STRENGTH, DURABILITY & CUSTOMIZATION ADD UP TO IHI'S PASSION



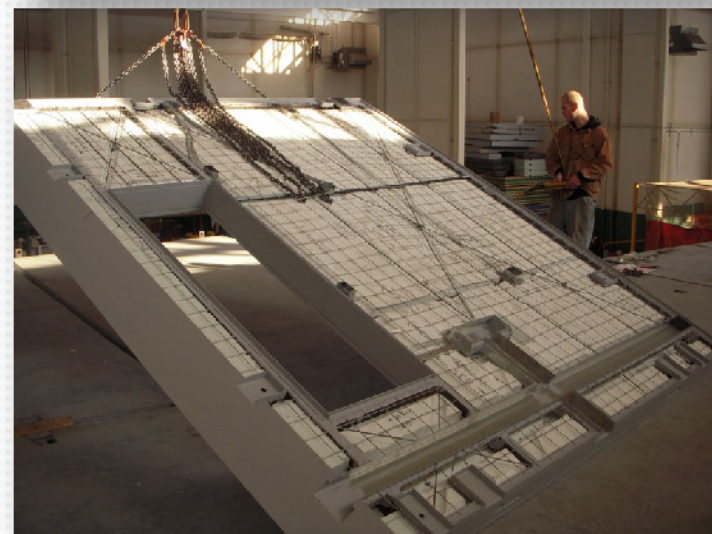


INSULATED CURVED PANELS ARE AN ADDITIONAL FEATURE TO IHI'S SYSTEM



MITRED CORNERS WITH THEIR PERFECT FIT TO PRODUCE A “CONCEALED” FINISHING THAT WILL ADD A BIG VALUE TO THE MANY UNIQUE IHI’S FEATURES

ASSEMBLY DRY RUN FOR THE UPPER FLOOR WALL PANELS FOR ACCURACY/QUALITY CONTROL PRIOR TO DISMANTLING THE LOWER WALL PANELS FOR CONCRETING. AFTER EXPERIENCING APPROX. (2 MONTHS) OF LONG TERM LOADING. NO BUCKLING WAS INCURRED (AS PER PREVIOUS SLIDES) IN WALLS AND FRAMES THAT ARE FAIRLY THIN & NOT CONCRETED. ANOTHER HUGE ADVANTAGE TO IHI OVER ANY OTHER KNOWN SYSTEM IN THE WORLD INCLUDING PRE-CAST CONCRETE AND CAST-IN-SITU CONCRETE





**DRY RUN ASSEMBLY OF THE THIRD SECTION OF THE SHOW HOME,
SHOWING VARIOUS ON-GOING INTERESTED DELEGATIONS**

DRY RUN ASSEMBLY OF THE PITCHED ROOF FRAMED PANELS WITH PERFECT FIT PRIOR TO LIFTING IT IN ONE PIECE TO BE INSTALLED OVER THE ADJACENT STRUCTURE. THE WHOLE STRUCTURE IS DESIGNED TO LAST FOR GENERATIONS TO COME

