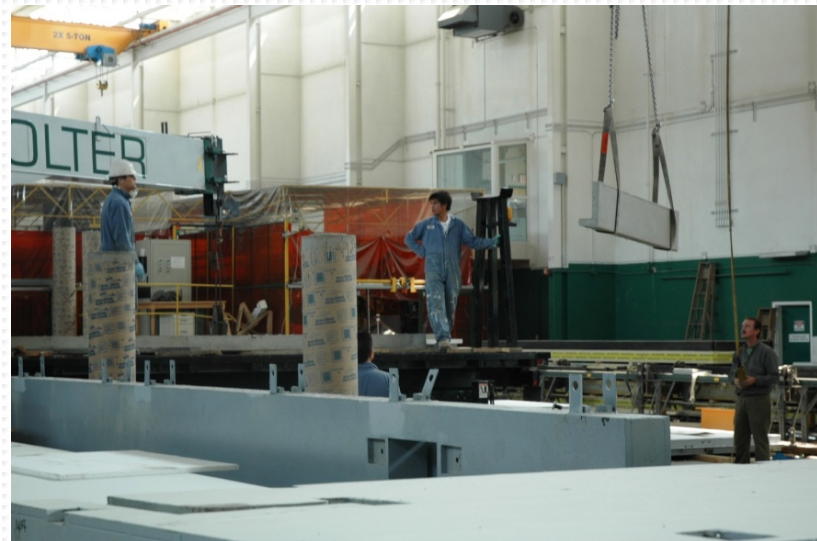
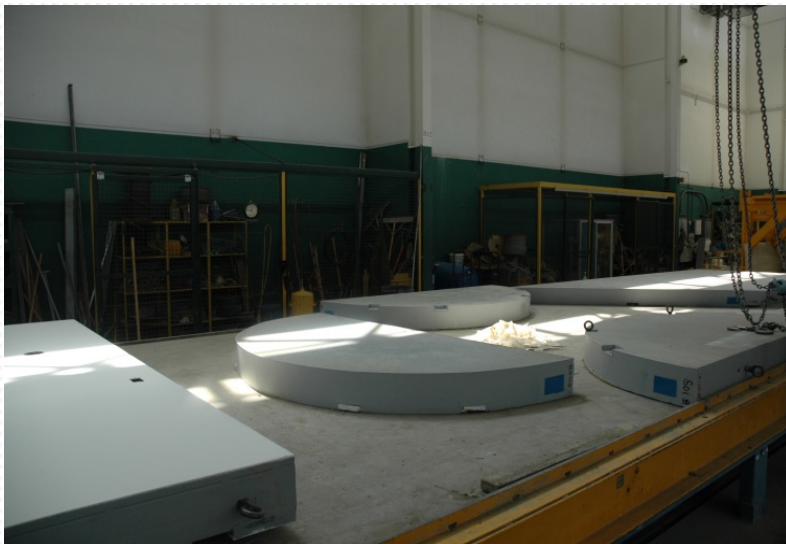


IHI R&D MANUFACTURING FACILITY

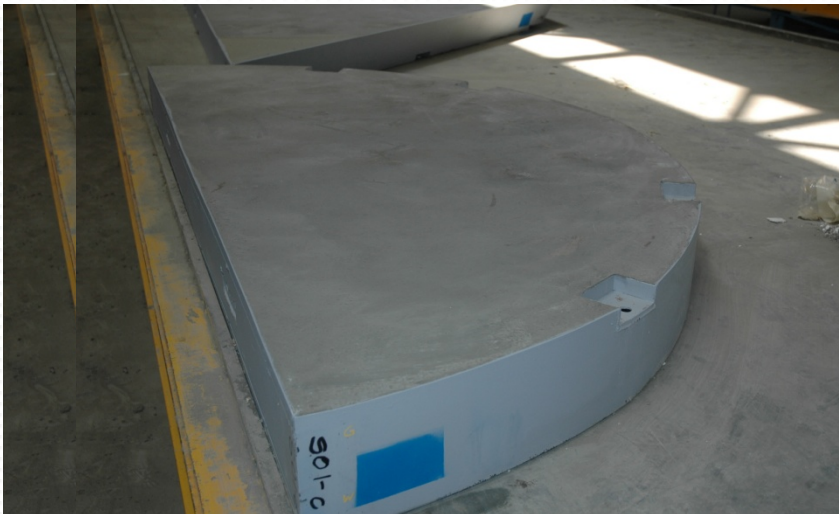
DELTA, BC RECENT ACTIVITY
SHIPPING PREPARATION PROCESS
JUNE 26, 2009



MOBILIZING PANELS TO FORM 10-TON PALLETS (BUNDLES) READY FOR SHIPMENT



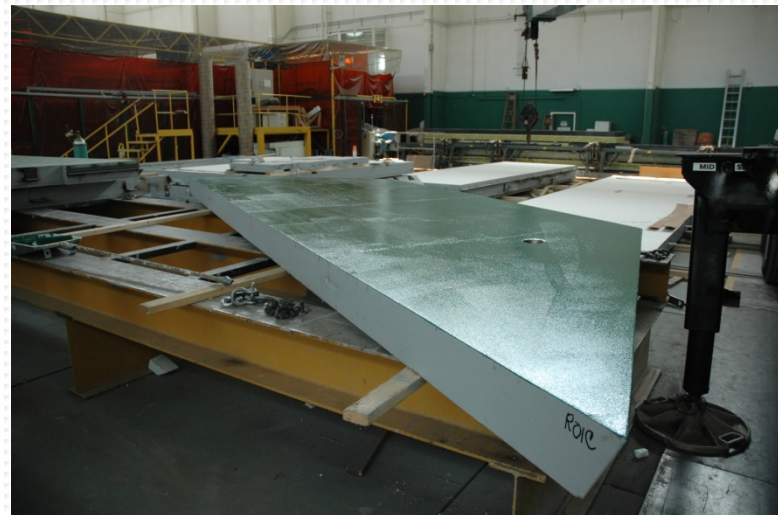
PANELS READY TO BE COATED FOR SEA FREIGHT SHIPMENT



PANELS READY TO BE COATED FOR SEA FREIGHT SHIPMENT



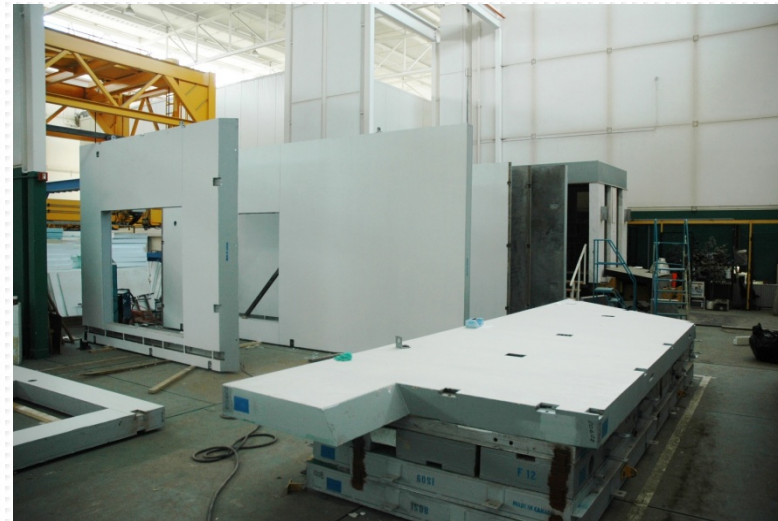
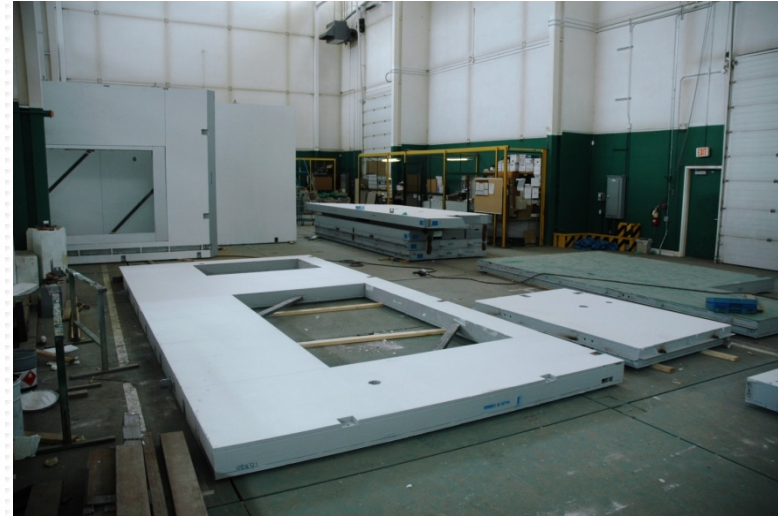
PANELS READY TO BE COATED FOR SEA FREIGHT SHIPMENT



PANELS READY TO BE COATED FOR SEA FREIGHT SHIPMENT



CURVED PANELS WITH CURVED STAINLESS STEEL TRIM BEFORE AND AFTER COATING



COATED PANELS READY TO BE BUNDLED TOGETHER IN 10-TON PALLETS



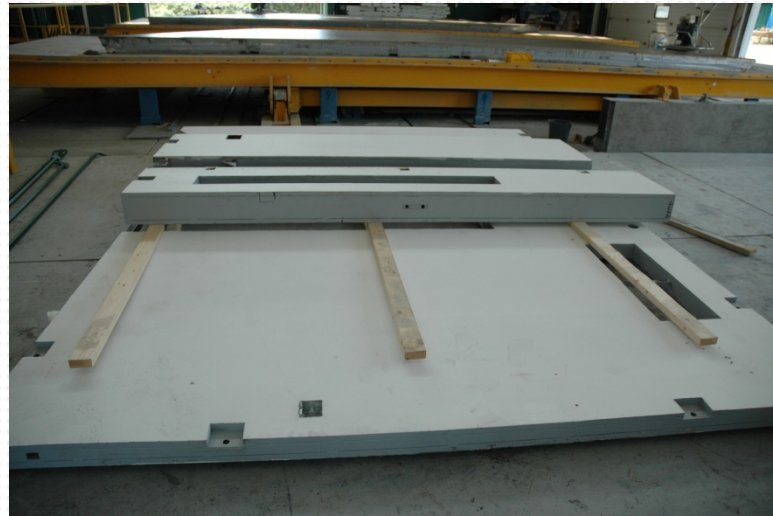
COATED PANELS READY TO BE BUNDLED TOGETHER IN 10-TON PALLETS



COATED PANELS READY TO BE BUNDLED TOGETHER IN 10-TON PALLETS



COATED PANELS READY TO BE BUNDLED TOGETHER IN 10-TON PALLETS INSIDE THE MANUFACTURING FACILITY



PANELS STAGED TOGETHER PRIOR TO PALLETIZING THEM INTO 10-TON BUNDLES



PANELS STAGED TOGETHER PRIOR TO PALLETIZING THEM INTO 10-TON BUNDLES OUTSIDE THE IHI R & D AND MANUFACTURING FACILITY



PANELS STAGED TOGETHER PRIOR TO PALLETIZING THEM INTO 10-TON BUNDLES



PANELS STAGED TOGETHER PRIOR TO PALLETIZING THEM INTO 10-TON BUNDLES